

CanoScan

COLOR FLATBED PHOTO/FILM SCANNERS

Canon

Delighting You Always



Film, Image And Document
Scanning The Fast & Easy Way

The Convergence Of Quality, Speed And Convenience

The CanoScan 9000F offers ultra-high-resolution image and film scanning at incredible speeds. It features Auto Scan Mode, Auto Document Fix and requires zero warm-up time. Seven EZ buttons make it effortless to use, while a built-in power supply and an internally wired Film Adapter Unit further simplify operation. Quality, speed and convenience – get it all with the CanoScan 9000F.



Seven EZ Buttons – Operation Is Seven-Times Easier!

- Three dedicated buttons for: creating a copy; initiating Auto Scan Mode; and scanning to your e-mail program
- Four additional buttons – Color, Black & White, Custom and Finish – provide advanced PDF functions



NEW!



AUTO SCAN

Starts Auto Scan Mode



COLOR

Scans with the most suitable settings to create PDF file



BLACK & WHITE



CUSTOM

Scans according to user's defined preferences



FINISH

Finishes production of a multi-page PDF file



COPY

Outputs scanned image data from your printer



E-MAIL

Adjusts the size of scanned data and attaches it to email automatically



FARE Level 3 – Advanced Image Correction For Film

- Automatically removes dust and scratch marks from film scans
- Revives images that have faded over time
- Corrects backlighting problems for proper subject exposure
- Reduces graininess for a smoother, more natural image



Superb Resolution, Focus & Illumination For Professional Scans

- High-resolution CCD sensor captures ultra-fine detail with exceptional accuracy
- Super Toric lens design heightens focus accuracy
- Advanced Light Guide increases uniformity of illumination by gathering and focusing light flux outside the optical path
- Redesigned Sensor Carriage further improves lighting accuracy

Ultra-High-Speed Scans & Zero Warm-Up Time

- High-luminance white LED eliminates up to 30 seconds of waiting time
- Quick response LED does not remain 'ON' after scanning, which saves energy
- Scan an A4 color document at 300dpi in just 7 seconds
- Scan a 35mm film negative at 1200dpi in only 18 seconds

Faster Film Scanning: 35mm & 120-Format

- New FAU module has a more powerful white LED light source for faster scans
- Use the special film guide to scan multiple frames simultaneously
- Scan up to 12 frames of 35mm positive or negative film at once



Scan up to 12 frames of 35mm negative film



Scan up to 12 frames of 35mm positive film

- Scan up to 4 mounted slides at the same time
- Film guide is adjustable and handles various sizes of 120-format film



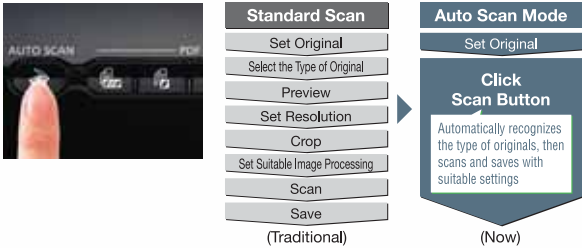
Mount up to four 35mm film slides



Various sizes of 120-format film

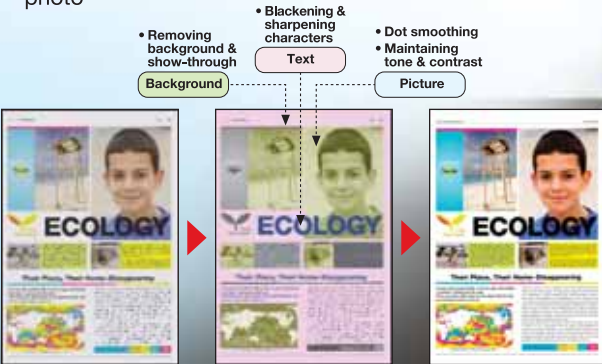
Auto Scan Mode – Just Click For The Perfect Scan

- Recognizes the type of original and makes all the suitable settings, so you can scan and save at the touch of a button
- A vast improvement to traditional scanning workflow as it reduces the number of steps involved



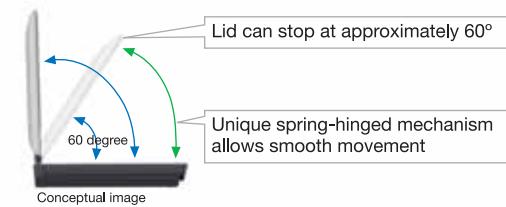
Auto Document Fix & Auto Photo Fix II Activated in Auto Scan Mode

- Auto Document Fix provides area-by-area analysis and correction of the entire image
- Analyzes the original based on content: text, image, background, etc.
- Sharpens and darkens text; improves background; maintains tone & contrast; smoothes dots
- Auto Photo Fix II optimizes color intensity, tone and brightness based on image type for a naturally perfect photo



Sophisticated Design Enhances Operation

- Spring-hinged lid can stop at 60° and offers smooth open-close operation



Eco-Friendly Scanning

- Consumes less power with the white LED light source
- Simplifies operation with a built-in power supply
- Requires less space by using an internally wired Film Adapter Unit
- Supports the latest Energy Star program
- Conforms to EU RoHS directive

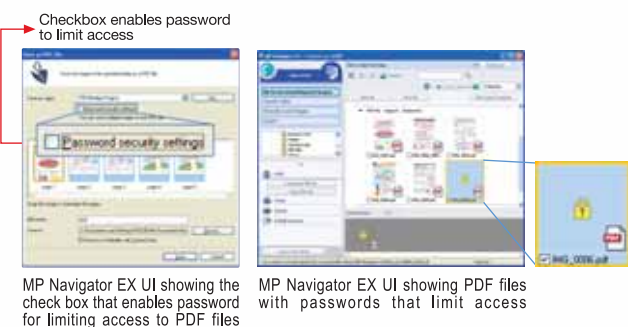


Advanced PDF Filing – Scan & File Bulky Documents With Ease

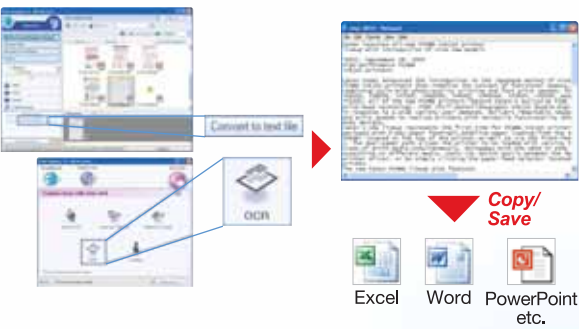
- **Create Categories**
Automatically places scanned and imported images / documents into categories; lets you create searchable, multi-page files



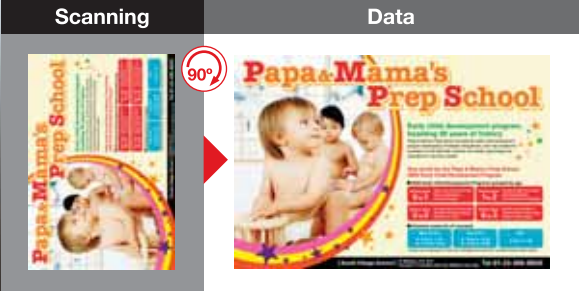
- **Added Security (Windows only)**
Restrict or limit access to files by giving them passwords



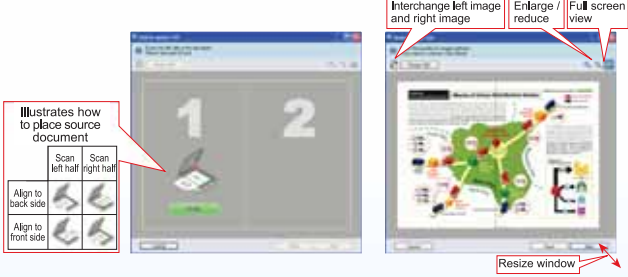
- **OCR Text Data Conversion**
Recognizes text from a scanned image and transfers into Notepad for editing (TXT file only)



- **Document Rotation**
Automatically rotates documents for correct orientation; corrects document slant



- **Stitch Assist**
It's easy to "stitch" several scanned sections of an original into a complete image



- **Shadow Removal**
Eliminates "gutter shadows" that sometimes occur when scanning books and magazines



Specifications

NEW!



CanoScan	9000F	8800F	5600F
Scanner Type	Flatbed	Flatbed	Flatbed
Scanner Element	CCD 12-line color	CCD 6-line color	CCD 6-line color
Light Source	White LED	White LED	White LED / Cold cathode fluorescent lamp
Optical Resolution*	9600 x 9600dpi (film) 4800 x 4800dpi (reflective documents)	4800 x 9600dpi	4800 x 9600dpi
Selectable Resolution	25 – 19200dpi	25 – 19200dpi	25 – 19200dpi
Scanning Bit Depth			
Grayscale	48-bit input (16-bit for each color) 16-bit (film scanning only) or 8-bit output	48-bit input (16-bit for each color) 16-bit (film scanning only) or 8-bit output	48-bit input (16-bit for each color) 16-bit (film scanning only) or 8-bit output
Color	48-bit input (16-bit for each color) 48 or 24-bit output (16-bit or 8-bit for each color)	48-bit input (16-bit for each color) 48 or 24-bit output (16-bit or 8-bit for each color)	48-bit input (16-bit for each color) 48 or 24-bit output (16-bit or 8-bit for each color)
Preview Speed**			
Color	Approx. 3sec	Approx. 3sec	Approx. 3sec
Scan Speed**			
Color	Approx. 7sec	Approx. 7sec	Approx. 11sec
Scanning Speed** (Reflective)			
Grayscale, B&W	12.1msec / line (4800dpi) 12.1msec / line (2400dpi) 6.1msec / line (1200dpi) 1.5msec / line (600dpi) 1.2msec / line (300dpi)	12.1msec / line (4800dpi) 12.1msec / line (2400dpi) 6.1msec / line (1200dpi) 1.7msec / line (600dpi) 1.0msec / line (300dpi)	14.6msec / line (4800dpi) 14.6msec / line (2400dpi) 9.7msec / line (1200dpi) 3.7msec / line (600dpi) 1.8msec / line (300dpi)
Color	12.1msec / line (4800dpi) 12.1msec / line (2400dpi) 6.1msec / line (1200dpi) 1.5msec / line (600dpi) 1.2msec / line (300dpi)	12.1msec / line (4800dpi) 12.1msec / line (2400dpi) 6.1msec / line (1200dpi) 1.7msec / line (600dpi) 1.0msec / line (300dpi)	14.6msec / line (4800dpi) 14.6msec / line (2400dpi) 9.7msec / line (1200dpi) 3.7msec / line (600dpi) 1.8msec / line (300dpi)
Scanning Speed** (Film)			
Color, Grayscale, B&W	1.5 – 48.4msec/line	1.5 – 36.3msec/line	1.8 – 58.4msec/line
Maximum Document Size	A4 / Letter: 216 x 297mm	A4 / Letter: 216 x 297mm	A4 / Letter: 216 x 297mm
Scanner Driver	TWAIN / WIA (Windows 7 / XP / Windows Vista)	TWAIN / WIA (Windows 7 / XP / Windows Vista)	TWAIN / WIA (Windows 7 / XP / Windows Vista)
Film Type / No. of Frames			
35mm strip	12	12	6
35mm slide	4	4	4
120 format film	max. 6 x 22cm (filmstrip only)	max. 6 x 22cm (filmstrip only)	–
Effective Scanning Area / Pixels			
35mm film**	24 x 36mm 9070 x 13606	24 x 36mm 4535 x 6803	24 x 36mm 4535 x 6803
120 format film**	56 x 220mm 21166 x 83150	56 x 220mm 10583 x 41575	–
Scanner Buttons (EZ Buttons)	7 buttons (PDF x 4, AUTO SCAN, COPY, E-MAIL)	7 buttons (PDF x 4, COPY, PHOTO/FILM, E-MAIL)	7 buttons (PDF x 4, COPY, SCAN, E-MAIL)
Other Features	FARE Level 3	FARE Level 3	–
Interface	USB 2.0 Hi-Speed	USB 2.0 Hi-Speed	USB 2.0 Hi-Speed
Operating Range			
Temperature	10 to 35°C (50 to 95°F)	10 to 35°C (50 to 95°F)	10 to 35°C (50 to 95°F)
Humidity	10 to 90% RH (20 to 80% RH for film scanning), without condensation formation	10 to 90% RH (20 to 80% RH for film scanning), without condensation formation	10 to 90% RH (20 to 80% RH for film scanning), without condensation formation
Power Supply	AC 100-240V, 50/60 Hz	AC 100-240V, 50/60 Hz	AC 100-240V, 50/60 Hz
Power Consumption			
Maximum during operation	Approx. 15W	Approx. 18W	Approx. 19W
Stand-by	Approx. 0.9W	Approx. 1.5W	Approx. 3.2W
OFF (USB bus power model; Suspend)	Approx. 0.5W	Approx. 1.0W	Approx. 0.4W
Environment (Plan)			
Regulation	RoHS (EU), WEEE (EU)	RoHS (EU), WEEE (EU)	RoHS (EU), WEEE (EU)
Eco-Label	Energy Star	Energy Star	Energy Star
Dimensions (W x D x H)	Approx. 270 x 480 x 111mm	272 x 479 x 100mm	272 x 419 x 97mm
Weight	Approx. 4.6kg	Approx. 4.2kg	Approx. 4.3kg



CanoScan		LiDE 700F
Scanner Type		Flatbed
Scanner Element		CIS (Color Contact Image Sensor)
Light Source		3-color (RGB) LED
Optical Resolution*1		9600 x 9600dpi (film) 4800 x 4800dpi (reflective documents)
Selectable Resolution		25 – 19200dpi
Scanning Bit Depth		
Grayscale		48-bit input 16-bit (film scanning only) or 8-bit output
Color		48-bit input (16-bit for each color) 48 or 24-bit output (16-bit or 8-bit for each color)
Preview Speed*2		
Color	A4 300dpi	Approx. 9sec
Scan Speed*3		
Color	A4 300dpi	Approx. 121sec
Scanning Speed*4 (Reflective)		
Grayscale, B&W		11.3msec / line (4800dpi) 5.9msec / line (2400dpi) 2.9msec / line (1200dpi) 1.8msec / line (600dpi) 2.3msec / line (300dpi)
Color		33.5msec / line (4800dpi) 33.8msec / line (2400dpi) 8.6msec / line (1200dpi) 4.5msec / line (600dpi) 2.4msec / line (300dpi)
Scanning Speed*4 (Film)		
Color, Grayscale, B&W		2.8. – 223.9msec/line
Maximum Document Size		A4 / Letter: 216 x 297mm (8.5 x 11.7in.)
Scanner Driver		TWAIN / WIA (Windows 7 / XP / Windows Vista)
Film Type / No. of Frames		
35mm strip		1
35mm slide		–
120 format film		–
Effective Scanning Area / Pixels		
35mm film*5		
Area		24 x 36mm
Pixels*7		9071 x 13606
120mm film*6		
Area		–
Pixels*7		–
Scanner Buttons (EZ Buttons)		4 buttons (COPY, SCAN, PDF, E-MAIL)
Other Features		3-Way position, 180° open
Interface		USB 2.0 Hi-Speed
Operating Range		
Temperature		5 to 35°C (41 to 95°F)
Humidity		10 to 90% RH (20 to 80% RH for film scanning), without condensation formation
Power Supply		Supplied via USB port
Power Consumption		
Maximum during operation		Approx. 2.5W
Stand-by		Approx. 1.5W
OFF (USB bus power model; Suspend)		Approx. 11mW
Environment (Plan)		
Regulation		RoHS (EU), WEEE (EU)
Eco-Label		Energy Star
Dimensions (W x D x H)		292 x 409 x 44mm
Weight		Approx. 2.1kg



Specifications are subject to change without notice.

*1. Optical resolution is a measure of maximum hardware sampling resolution, based on ISO 14473 standard.

*2. Preprocessing time is not included.

*3. Color document scan speed is measured with ISO/IEC 24712 Newsletter. Scan speed indicates the time measured between pressing the scan button of the scanner driver and the on-screen status display turning off. Scan speed may vary depending on system configuration, interface, software, scan mode settings, document size, etc.

*4. The fastest speed in Hi-Speed USB on Windows PC. Transfer time to computer is not included.

*5. Based on 1 frame of 35mm strip film.

*6. Based on 6 x 22cm film.

*7. Based on the maximum scanning resolution.



Delighting You Always

South & Southeast Asia Regional Headquarters

Canon Singapore Pte. Ltd.

1 HarbourFront Avenue #04-01 Keppel Bay Tower
Singapore 098632
Tel: 65-6799 8888 Fax: 65-6799 8882
www.canon-asia.com

Bangladesh:

J.A.N. Associates
Tel: 880-2-8611444
Fax: 880-2-8610410

Brunei:

Interhouse Company
Tel: 673-2-653001
Fax: 673-2-653003

Cambodia:

i-Click (Cambodia) Pte Ltd
Tel: 855-23-997573
Fax: 855-23-997373

India:

Canon India Pvt. Ltd.
Tel: 91-124-4160000
Fax: 91-124-4160011
www.canon.co.in

Indonesia:

P.T. DataScrip
Tel: 62-21-6544515
Fax: 62-21-6544811
www.canon.co.id

Malaysia:

Canon Marketing (Malaysia) Sdn. Bhd.
Tel: 603-78446000
Fax: 603-78450505
www.canon.com.my

Maldives:

SIMDI
Tel: 960-324819
Fax: 960-318433

Myanmar:

Myanmar Golden Rock International
Co., Ltd.
Tel: 95-1-202092/3/4
Fax: 95-1-202079

Nepal:

International Electronics Concern (P) Ltd.
Tel: 977-1-4421991
Fax: 977-1-4421909

Pakistan:

Mega Business Machines
Tel: 9221-34302026-7
Fax: 9221-34386308

SINGAPORE:

Canon Singapore Pte. Ltd.
Tel: 65-6799 8888
Fax: 65-6221 7577
www.canon.com.sg

Sri Lanka:

Metropolitan Computers (Pvt) Ltd.
Tel: 94-11-2437797
Fax: 94-11-2448980

Thailand:

Canon Marketing (Thailand)
Co. Ltd.
Tel: 66-2-3449999
Fax: 66-2-3449910
www.canon.co.th

Vietnam:

Canon Singapore Pte. Ltd.

Ho Chi Minh City Representative
Office & Showroom
Tel: 84-8-38200466
Fax: 84-8-38200477
www.canon.com.vn

Hanoi Representative Office

Tel: 84-4-7711677
Fax: 84-4-7711678

Dealer's Stamp

All information contained in this brochure is correct at the time of printing.

